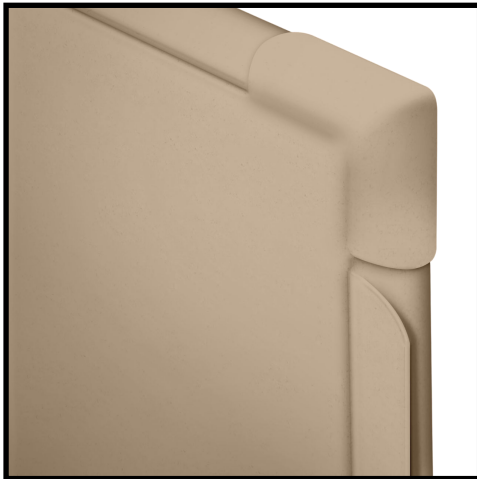




**ONE POINT  
PARTITIONS**

**BATHROOM PARTITIONS**

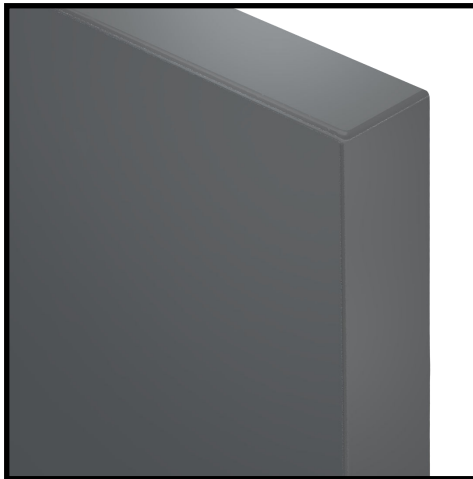
# 5 DIFFERENT FINISHES TO CHOOSE FROM



## POWDER COATED STEEL

"ECONOMICAL AND DURABLE"

**Powder Coated Steel** partitions provide high-tech quality at an economical price. The baked enamel finish is electrostatically applied over galvanized steel. The finish is highly resistant to wear, fading, staining, scratching, and scuffing. It is easily cleaned with mild soap and wiped dry.



## LAMINATE

"A CLASSIC CHOICE"

**Plastic Laminate Partitions with Moisture Guard Edge Banding** fuses with the substrate creating a seamless beveled profile that eliminates any unsightly black lines that appear in standard Plastic Laminate, and is 3 times more resistant to moisture. Available in 48 colors/patterns.



## SOLID PLASTIC

"VERY LOW MAINTENANCE"

**Solid Plastic (HDPE)** toilet partitions are the ideal choice for high-traffic areas. HDPE solid plastic is water resistant and unaffected by high humidity or corrosive environments. They never need painting, and will not easily dent or chip. It is the material of choice for low maintenance.

Now NFPA 286 compliant.

[ONLINE PRICING TOOL](#)

[www.onepointpartitions.com/get-a-quote/](http://www.onepointpartitions.com/get-a-quote/)



# DEPENDING ON YOUR STYLE PREFERENCE:



## PHENOLIC

"DURABLE AND CONTEMPORARY"

**Phenolic Black Core** partitions hold up even under severe moisture conditions from showers, pools, and saunas, or when maintenance includes hosing down toilet partitions. Ideal for where vandalism is a problem. In a full color spectrum—all with black edges. Available in all styles.



## STAINLESS STEEL

"HIGH CLASS AND HIGH QUALITY"

**Stainless Steel** The elegance of stainless steel complements any design style and wears well. The corrosion resistant benefits of type 304 stainless steel allows for easy maintenance – even scratches can be buffed out. Satin or textured finish. Available in all styles.

# POWDER COATED STEEL WITH HONEYCOMB CORE FOR SOLID CONSTRUCTION.



## POWDER COATED STEEL

Powder Coated Steel partitions are manufactured with Integrated Privacy. Thermoset hybrid powder coating on these galvanized steel partitions provide quality and economy. The finish is resistant to wear, fading, and scuffing. It is easily cleaned and wiped dry.

Powder Coated Steel Integrated Privacy partitions are engineered with built-in privacy and manufactured as one color matched unit, offering complete privacy without the need for retrofitted components. Exactly what building occupants want and deserve.

The only Powder Coated Steel Partitions that include Privacy Strips as Standard.



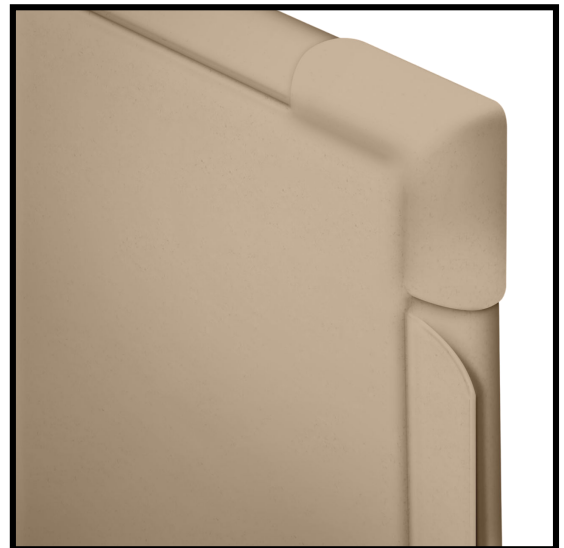
Relative Cost Value 100



\* The standard hardware finish is Zamac Chrome, with additional options available in Aluminum and Stainless Steel.

\* All hardware kits are included and ready to install with your order.

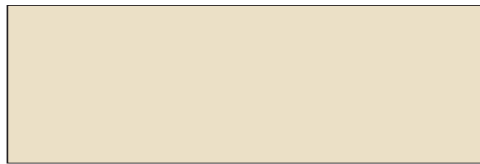
## INTEGRATED PRIVACY STRIPS



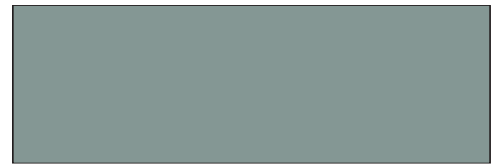
# POWDER COATED STEEL COLOR SELECTION



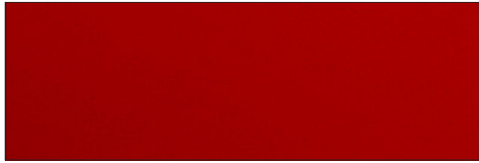
White 2129



Almond 2103



Sage 2141



Red 2145



Dark Khaki 2109



Khaki 2115



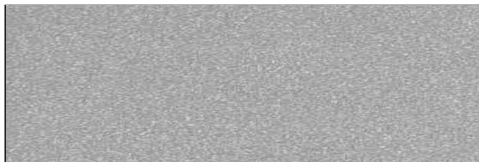
Burgundy 2148



Gray 2125



Charcoal 2123



Metallic Silver 2171



Azure 2101



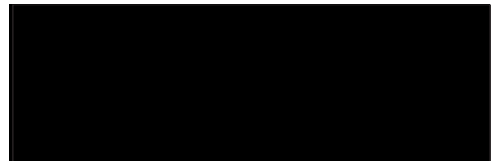
Royal Blue 2135



Sandy Beach 2150



Pepper Dust 3590



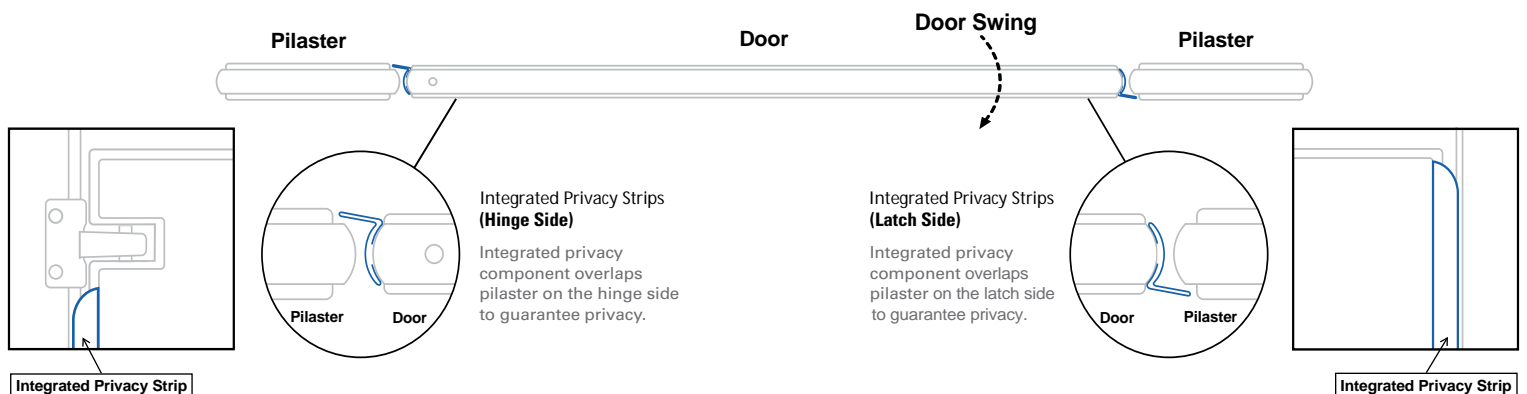
Black 2127

All 15 colors available with no extra cost or lead time.

Due to variances in color reproduction, if color choice is important, please request samples prior to ordering.

## POWDER COATED STEEL

### DOORS INCLUDE INTEGRATED PRIVACY STRIPS



# PLASTIC LAMINATE, THE FINISH OF CHOICE WHEN AESTHETICS ARE ESSENTIAL.



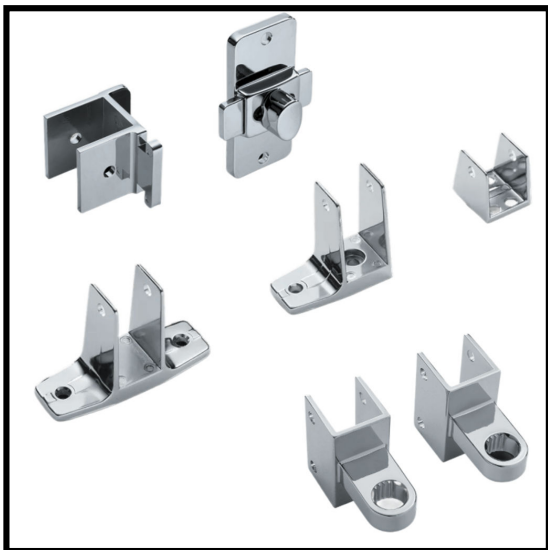
## LAMINATE

Exclusive plastic laminate Moisture Guard Edge Banding fuses with the substrate creating a seamless beveled profile that eliminates any unsightly black lines that appear in standard plastic laminate. ASTM tests confirm 3X greater durability with increased resistance to moisture and humidity.

A sheet of particleboard forms the core of these partitions, which allows for the lower price. Plastic laminate then covers the particleboard on either side, followed by an edge band that is heat sealed to add a touch of strength and security. As with the powder coated steel, the final partition is strong and sturdy, and the wood core helps keep the price down. While the two partition materials do have a lot in common, laminate ultimately represents a step up from the powder coated steel.



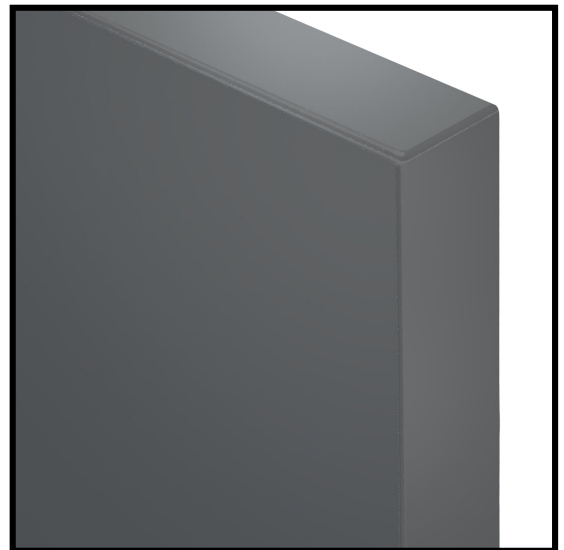
Relative Cost Value 110



\* The standard hardware finish is Zamac Chrome, with additional options available in Aluminum and Stainless Steel.

\* All hardware kits are included and ready to install with your order.

## MOISTURE GUARD EDGES



# PLASTIC LAMINATE COLOR SELECTION



\*\* Wheat Strand 9110



Casual Linen 4538



Crisp Linen 1150



\*\*Asian Night 9550



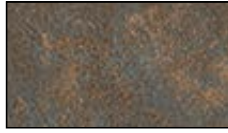
\*\*Windswept  
Pewter 3849



Folkstone Celesta  
3300



Dove Gray 3010



Patine Bronze 4707



Spruce Mist 5516



\*\*Phantom Charcoal  
9214



Brittany Blue 7010



\*\* Kingswood Walnut  
9218



\*\* Hampton Walnut  
9759



Graphite Graphix  
3020



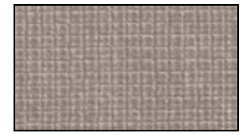
Carrara Bianco 1096



\*\*Mahogany 9939



\*\* Aged Ash 9844



\*\* Pewter Mesh 5993



Silver Gray 3000



\*\*Burnt Strand 5107



Sand 4010



Canyon Zephyr  
3713



\*\*Natural Recon  
9796



\*\* Handspun  
Chestnut 4036



Algae 5796



Storm Solidz 3542



\*\*Smoky Brown  
Pear 9488



Smoke 8450



Black 2000



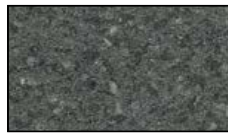
\*\*Field Elm 9799



\*\* Handspun Pearl  
3033



Graphite 2150



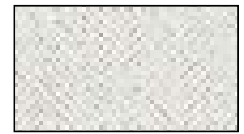
Smoke Quarstone  
3350



\*\*Millennium Oak  
9887



Fog 3450



\*\* Cotton Cloth 1681



\*\*Weathered Ash  
9842



\*\*Satin Stainless  
5030



\*\* Antique Mango  
9783



Navy Grafix 7318



\*\* White Ash 1841



Jadeite 5198



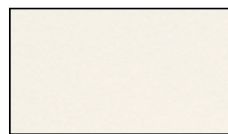
\*\* Neo Walnut 7954



\*\* Danish Maple 9906



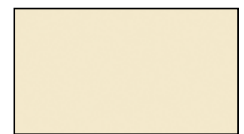
Taupe 9096



Mission White 1010



\*\* Handspun Slate  
3035



Almond 4000

**All 48 colors available with no extra cost or lead time.**

\* Directional Pattern — Pattern on panels over 60" wide will run perpendicular to pattern on doors and plasters.  
Due to variances in color reproduction, if color choice is important, please request samples prior to ordering.

# SOLID PLASTIC PARTITIONS ARE ENVIRONMENTALLY SAFE.



## SOLID PLASTIC

Solid plastic partitions are water resistant and unaffected by steam or high humidity. They have passed the NFPA 286 fire test standard and our most popular colors are also available in 100% post-consumer recycled material.

These partitions represent excellent middle-of-the-road pricing, but the value they offer is nothing less than superb. They are heavy-duty, highly durable, and built to take just about any type of vandalism or damage without missing a beat.

These built-to-last partitions consist of at least one inch of solid plastic all the way through. Because there's no light core, they can last through even the toughest abuse. For school settings or any other location where you expect vandalism, these are an excellent choice.



Relative Cost Value 190



\* The standard hardware finish is Aluminum, with additional options available in Stainless Steel.

\* All hardware kits are included and ready to install with your order.

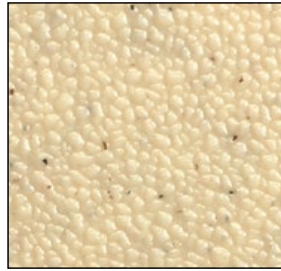
# SOLID PLASTIC COLOR SELECTION



White  
9201



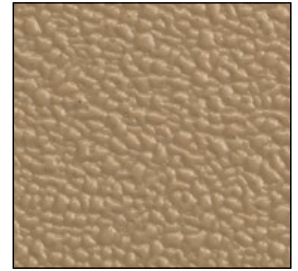
Cream  
9235



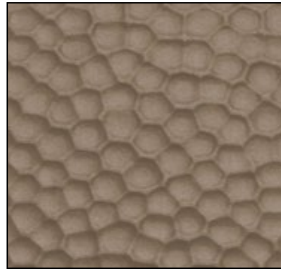
Ivory Essence  
Speckle 9500



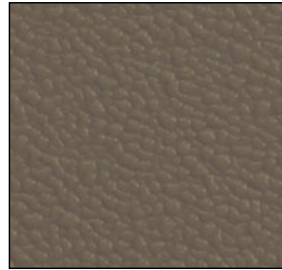
Caramel  
9658



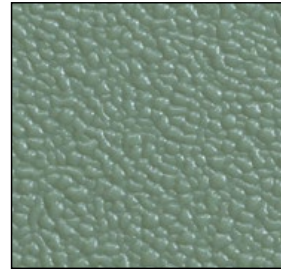
Mocha  
9212



Metallic Bronze  
9513



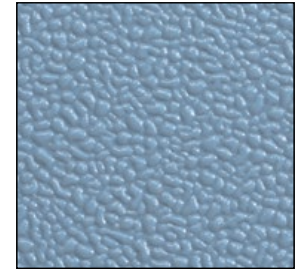
Olive  
9223



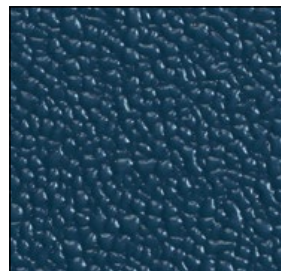
Moss  
9233



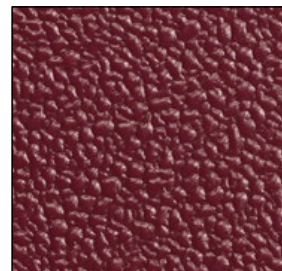
Hunter Green  
9508



Azure  
9231



Blue  
9509



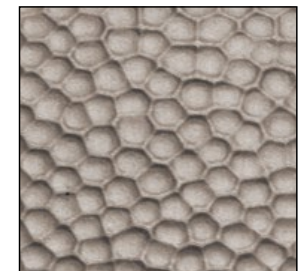
Burgundy  
9211



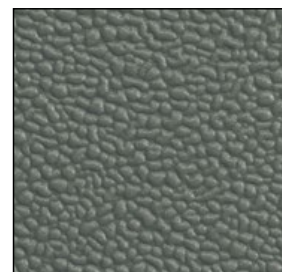
Folkstone Gray  
9400



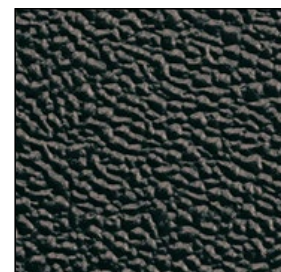
Gray  
9200



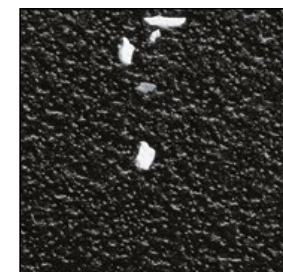
Metallic Silver  
9511



Charcoal  
9237



Black  
9205



Black Confetti  
9217



**20 COLORS IN STOCK**  
**NO EXTRA COST • NO EXTRA LEAD TIME**



Due to variances in color reproduction, if color choice is important, please request samples prior to ordering.

# PHENOLIC PROVIDES SUPERIOR STRENGTH AND DURABILITY.



## PHENOLIC

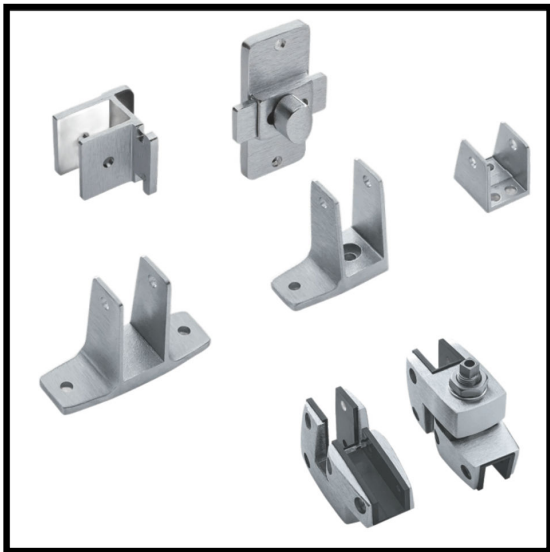
Black Core Phenolic sheets are fused at high temperatures and pressure. In addition to strength and serviceability, a wide range of colors provides limitless design flexibility.

Phenolic core partitions are noteworthy because of their excellent resistance to everything from heavy traffic to rust and corrosion. They are the second most expensive toilet wall partition material, but they offer outstanding value for the price and represent a phenomenal investment due to their longevity.

Unlike the other partition materials which typically rely on plastic, steel, or both, phenolic partitions consist of multiple layers of paper pressed tightly together and soaked in a coating of phenolic resin. The resin causes the paper to harden and become stiff and sturdy, and bonds them together to prevent dirt or mold from breaking them apart.



Relative Cost Value 215



\* The standard door hardware finish is Brushed Zamac and mounting brackets are Stainless Steel or upgrade to all Stainless Steel or all Aluminum.

\* All hardware kits are included and ready to install with your order.



## BLACK CORE PHENOLIC COLOR SELECTION

All 15 below colors available with no extra cost or lead time.

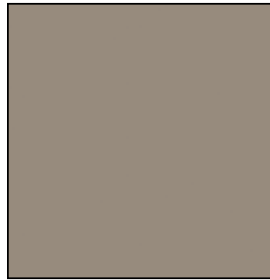
\* Directional Pattern – Pattern on panels over 60” wide will run perpendicular to pattern on doors and plasters.  
Due to variances in color reproduction, if color choice is important, please request samples prior to ordering.



Silver Gray 3000



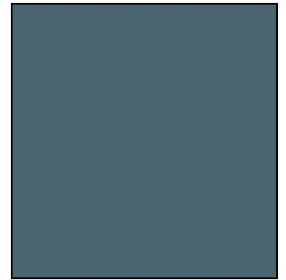
Dove Gray 3010



Taupe 9096



Graphite 2150



Graphite Blue 6944



\*Kingswood Walnut  
9218



\*Weathered Ash  
9842



\*Burnt Strand 5107



\*Neo Walnut 7954



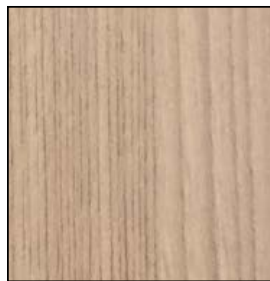
Graphite Grafix 3020



\*White Ash 1841



\*Silveretta 9229



\*Aged Ash 9844



\*Natural Recon 9796



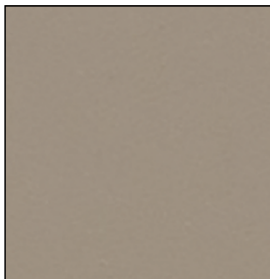
\*Asian Night 9550

## COLOR-THRU PHENOLIC COLOR SELECTION

SAME PHENOLIC MATERIAL AS BLACK CORE PHENOLIC, BUT WITH SOLID COLOR EDGE CONSTRUCTION

\* ADD 40% upcharge cost to our Quote for Black Core Phenolic on all below colors except Black 2000C.

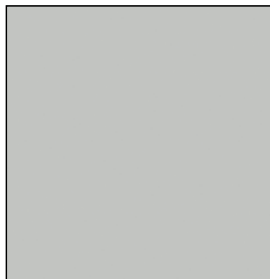
\* Below colors have longer Lead Time, except Black 2000C. Call us to confirm Color Thru Lead Time.



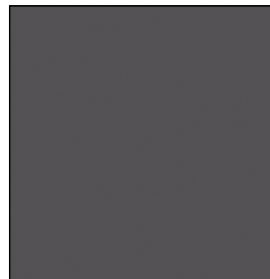
Sahara Beige 4816



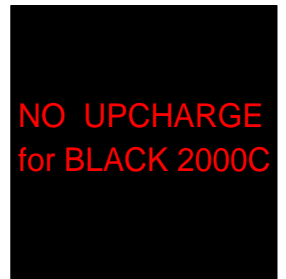
Dark Grey 3871



Pastel Grey 3074



Charcoal 3077



Black 2000C

# STAINLESS STEEL TYPE 304 IS DURABLE AND ELEGANT.



## STAINLESS STEEL

Stainless steel partitions are manufactured with Integrated Privacy and complement any design scheme. By adding a textured finish, increased resistance to vandalism can be achieved. The finish is resistant to wear, fading, and scuffing. It is easily cleaned and wiped dry.

Stainless Steel Integrated Privacy Partitions are engineered with built-in privacy and offering complete privacy without the need for any retrofitted components. Exactly what building occupants want and deserve.

The only Stainless Steel Partitions that includes Privacy Strips as Standard.



Relative Cost Value 225



\* The standard hardware finish is Zamac Chrome, with additional options available in Aluminum and Stainless Steel.

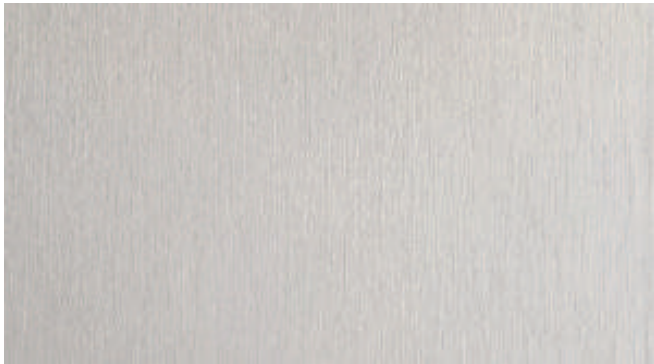
\* All hardware kits are included and ready to install with your order.

## INTEGRATED PRIVACY STRIPS



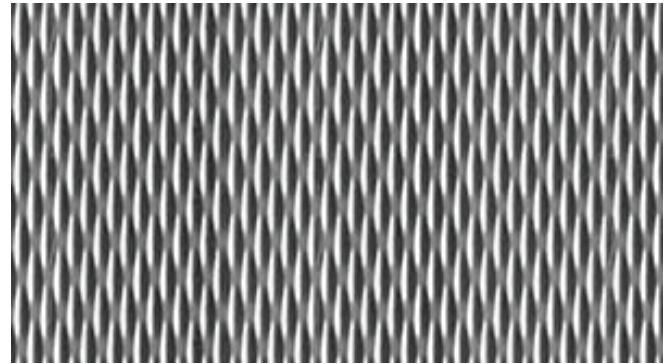
# STAINLESS STEEL FINISH SELECTION

## STANDARD FINISH



#4 SATIN

## OPTIONAL FINISH SELECTIONS

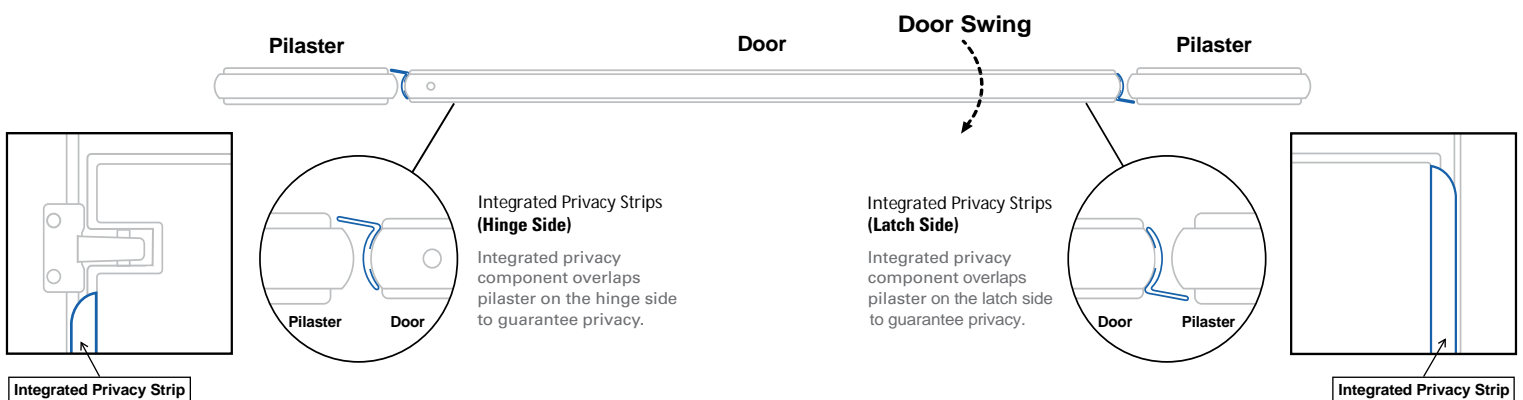


DIAMOND

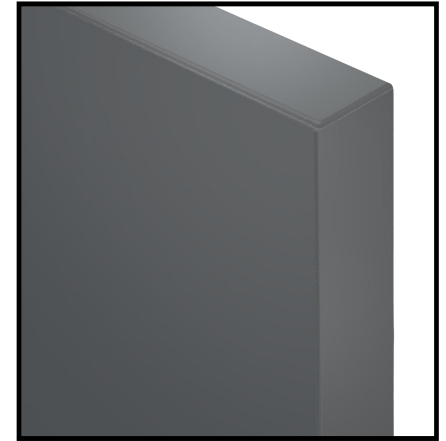
30% upcharge over standard finish and extra lead time

# STAINLESS STEEL

## DOORS INCLUDE INTEGRATED PRIVACY STRIPS



# 5 DISTINCT MATERIALS



**POWDER COATED STEEL**

**LAMINATE**

Relative Cost Value
Hardware Included
Pros
Colors
Delivery Included
Warranty
Low Emitting Material Compliance
Wet Area Suitability
ADA Compliance
Lead Time

100	110
✓	✓
Least Expensive	Many Colors
15	48
Yes	Yes
3 Years	5 Years
✓	✓
★ ★ ☆ ☆ ☆	★ ★ ★ ★ ★
✓	✓
48 Hours	48 Hours

# TO MATCH ANY AESTHETIC AND PERFORMANCE NEED.



**SOLID PLASTIC**

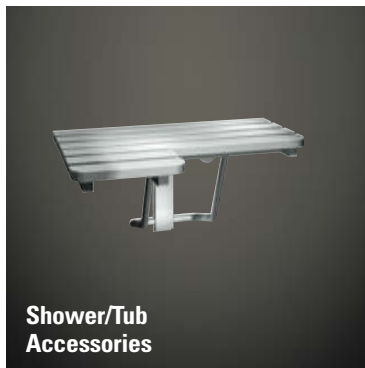
**PHENOLIC**

**STAINLESS STEEL**

Relative Cost Value	190	215	225
Hardware Included	✓	✓	✓
Pros	Extremely Durable	Sleek and Strong	Classic Look
Colors	20	20	2
Delivery Included	Yes	Yes	Yes
Warranty	25 Years	25 Years	5 Years
Low Emitting Material Compliance	✓	✓	✓
Wet Area Suitability	★★★★★	★★★★★	★★☆☆☆
ADA Compliance	✓	✓	✓
Lead Time	48 Hours	48 Hours	48 Hours



# TOILET ACCESSORIES



# WE KNOW PARTITIONS

## WE SUPPLY TOILET AND BATHROOM PARTITIONS ALL OVER THE COUNTRY.

We are one of the largest bathroom stall distributor in the country and are backed by an experienced factory that produces and delivers thousands of stalls year after year. Our Bathroom Partition Experts can handle new restroom build-outs, replacements, or retrofits in older existing restrooms. You will be matched with a Partition Expert who will guide you through the design, quote, order, and delivery process.

We have been a member of the Better Business Bureau since 2011 & have an A+ rating. Deal with the best that has the credibility, know-how, and can accommodate your English or Spanish speaking needs.

Are you ready to get started with a new order? We are here for you.

**CONTACT US NOW TO START YOUR NEXT ORDER.**

## Now offering Hassle-Free deliveries!!

We are proud to offer delivery from your local terminal to your location at no extra charge.

- Free liftgates
- Free delivery appointment scheduling
- No extra charges for non-commercial deliveries
- Applies only to complete stall orders directly purchased from One Point Partitions

## FREE DESIGN ASSISTANCE

### AND OTHER GREAT BENEFITS

At One Point Partitions, we don't believe in a one-size-fits-all approach. We want to work with you when designing restrooms to maximize privacy and comfort. We will take into account your preferences to create a mock up of the bathroom design you want – and we'll do it for free!

To help you make your choice in materials and colors, we offer free samples. Identify the ones that appeal to you the most here or on our website and tell us which ones you'd like to compare in person. Seeing them under your unique lighting conditions and environment can help you pick the right combination that fits your style.

You'll be glad to know that all of our bathroom partitions are manufactured by hard-working Americans right here in the USA. Keeping our citizens working and ensuring top quality is important to us.

With our experience, selection, and value, we have a restroom partition solution that's right for you. We look forward to showing you how we've become a trusted supplier for bathroom partitions for customers all across America. Contact one of our design team members and let us get started on your next project!



phone: 800-756-6817  
email: [sales@onepointpartitions.com](mailto:sales@onepointpartitions.com)  
online: [www.onepointpartitions.com](http://www.onepointpartitions.com)